



safeli

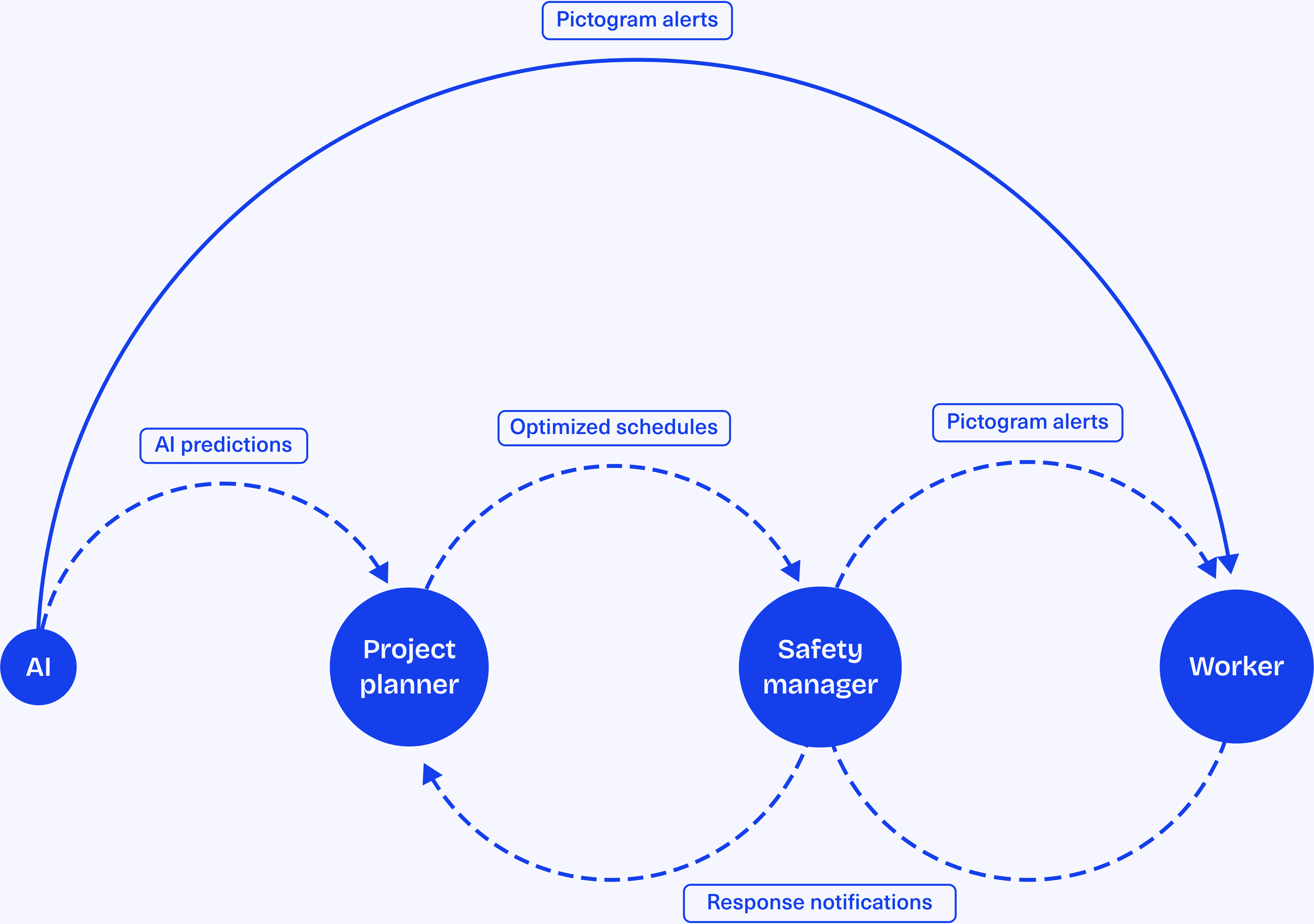
Safety for everyone everywhere

safeli is a collaborative safety management system for planners, managers, and workers, enabling proactive safety actions. Powered by AI, it identifies risks and communicates them through 3D visuals and pictograms, ensuring clear, non-verbal communication across all users.

For proactive & collaborative safety management

Construction sites are among the most dangerous workplaces. Workers are often scattered across the site, and the complex hierarchy of subcontractors creates communication gaps. As a result, important safety information often gets lost, leaving workers at risk.

Unfortunately, traditional safety measures like responding to accidents after they happen or relying on text warnings aren't enough. Reactive actions don't prevent future accidents, and text-based alerts can be easily misunderstood and slow down reaction time.



1.Prediction

AI
generates hazard predictions based on the current site data and past accident data

2.Planning

Project planner
optimizes schedules and allocates resources based on the AI predictions

3.Updates

Safety manager
checks updates and identifies any missing dangers to issues safety pictogram alerts

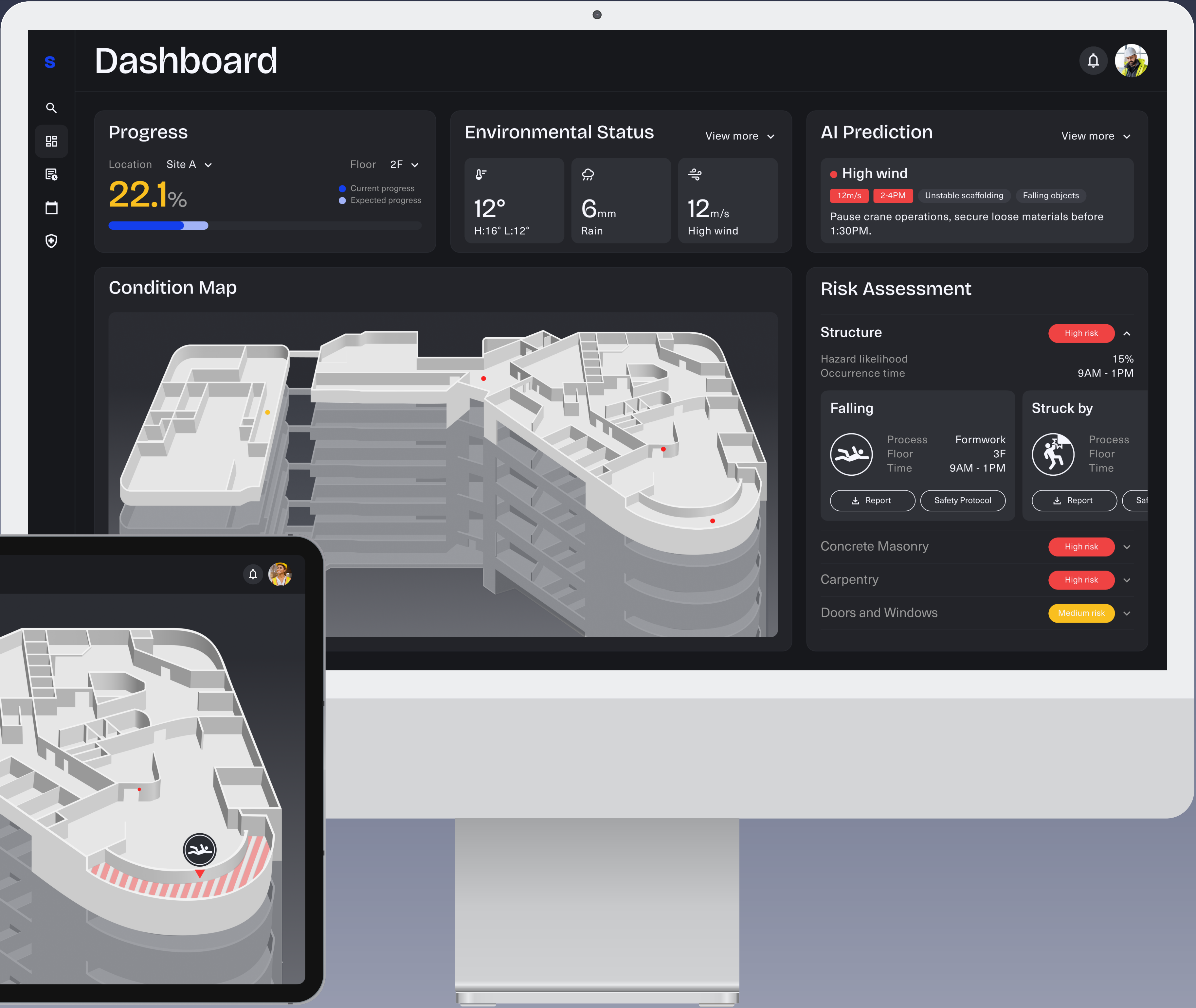
4.Response

Worker
identifies that they received alert and takes appropriate actions

safeli platform

Safety information for everyone everywhere

safeli was designed as a unified communication platform to predict potential hazards and update all workers through their devices regardless of their location. This offers a real-time updated safety information for all users resulting in borderless communication and proactive accident prevention.



Project planner's interface

Proactive safety management and planning with AI predictions

Safety overview

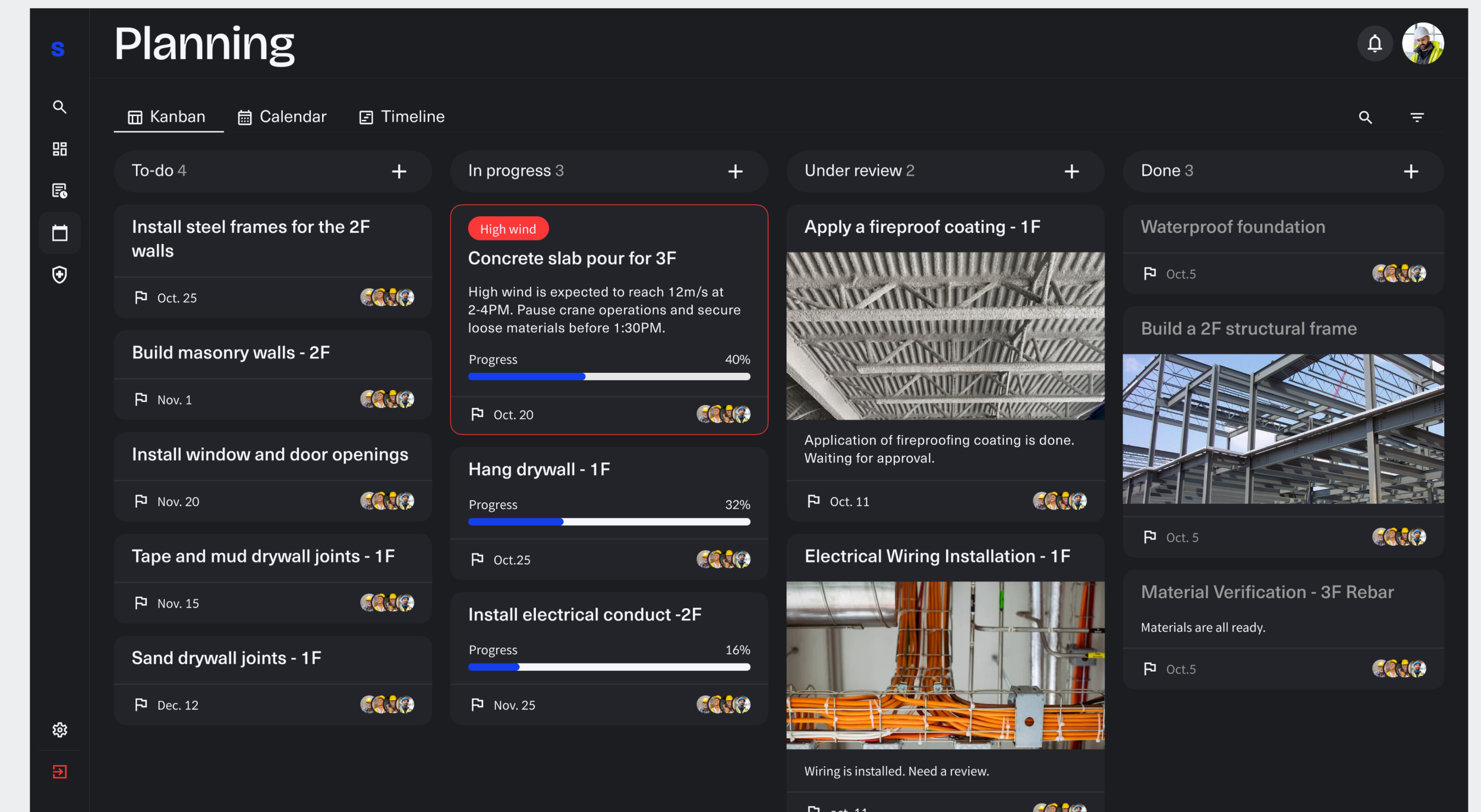
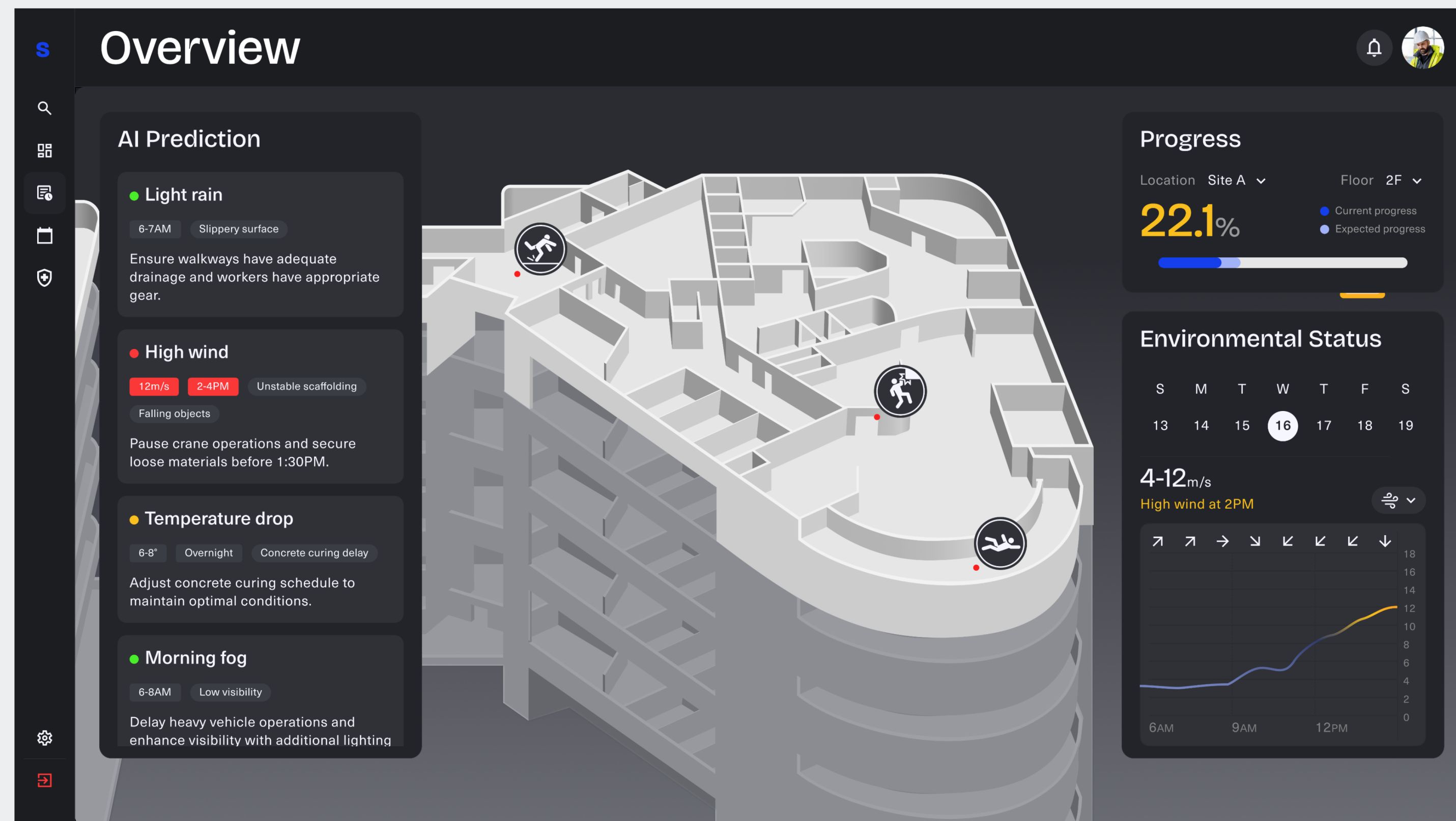
3D overview of the construction site allows project planners to monitor current construction progress as well as the safety status on any part of the construction site.

AI Predictions

The core of the platform is the AI that analyses current environment based on the past accident data and generates hazard predictions.

Planning

Based on the AI predictions, planners can adjust schedules and efficiently allocate resources to ensure safe and timely completion of construction



Safety manager
& worker's interface

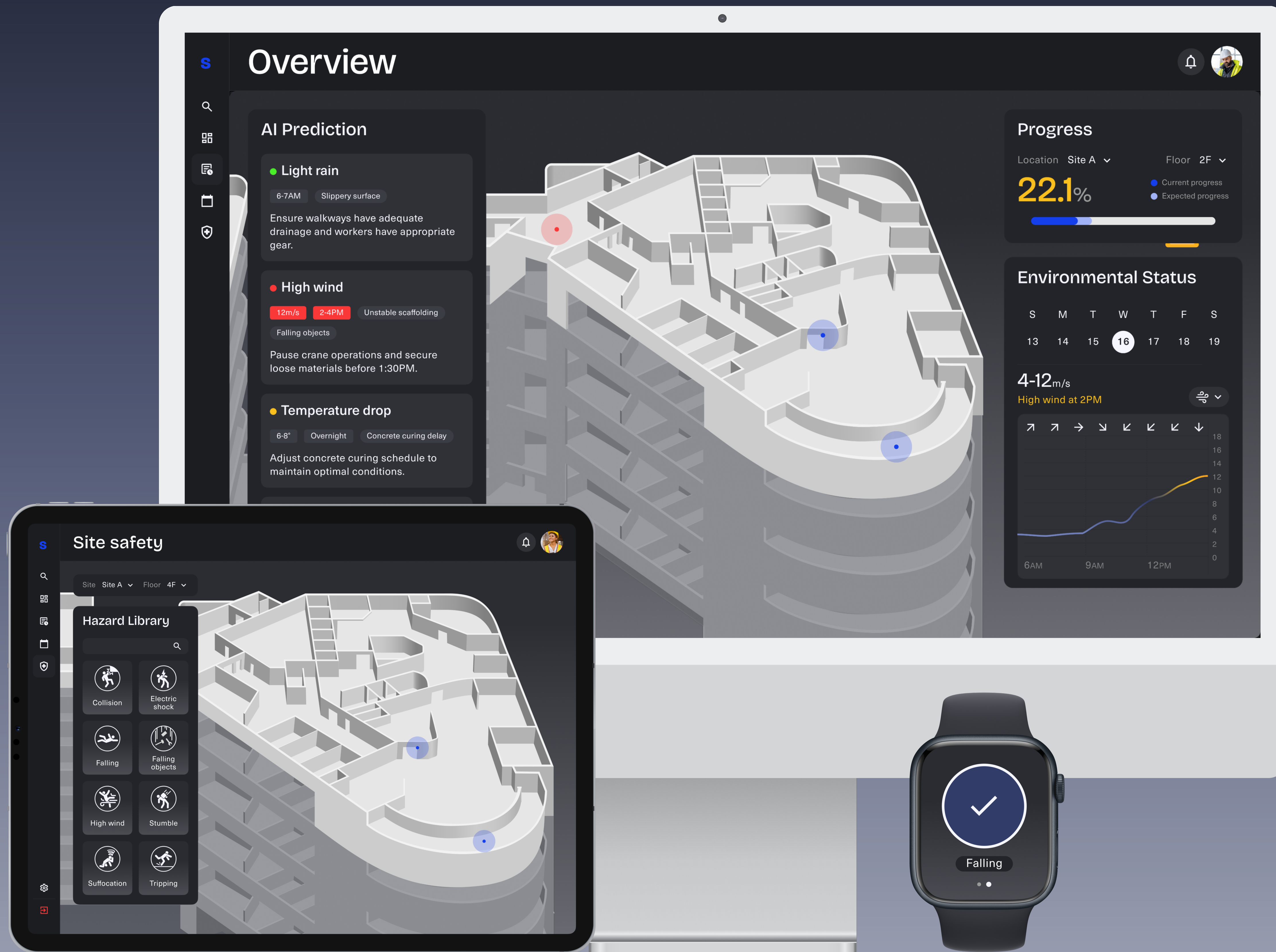
Easy hazard communication
with safety pictograms

On-site managers monitor the safety updates and verify the scheduling information during their safety rounds. When a potential hazard or schedule clash is identified, managers immediately issue alerts to workers in danger via drag and dropping appropriate pictogram.

Pictograms

Pictogram alerts improve communication by enhancing clarity and reducing the time needed to understand critical warnings or instructions.





safeli platform

Quick response by double tap

After receiving pictogram alert, workers can quickly notifying managers and planners that alert has been received. Double tapping watch screen will change indicators on the platform from red to blue, keeping all users updated on the safety progress.